

## Technical Data Sheet (TDS) **PRIME PRMS33**

### MILD SOLVENT BASED INKS

Advanced Mild Solvent fully compatible with Mimaki™ JV33/CJV30™ SS21 inks. Features very low odor level, wide substrates range and outstanding print quality.

### PRIMARY FEATURES AND BENEFITS

- Supported by Bordeaux Bulk Ink System (BBIS)
- Very fast drying
- Very low odor level
- Perfect jetability, no clogging and/or deflection
- Excellent print quality
- Resists fading when exposed to outdoor conditions
- Water Resistant
- Outdoor durability without lamination: up to 2 years on qualified substrates depending on climatic zone
- Wide color gamut
- Vivid vibrant colors
- Smooth tonal gradations
- Compatibility and excellent adhesion on most self-supporting flexible and pressure sensitive vinyls

### APPLICATIONS:

Use PRMS3 for most outdoor applications requiring light-fastness and/or water resistance, and also for indoor viewing applications.

### SPECIFICATIONS:

**COLORS:** black, cyan, magenta, yellow, light cyan, light magenta

**CONFIGURATIONS:** 440ml cartridges, 1L bottles and 900ml ink bags for BBIS.

**PRINTER COMPATIBILITY:** Fully compatible with Mimaki™ SS21™ original inks. Please refer to Bordeaux Digital Printink web site for full compatibility list ([www.c-m-y-k.com](http://www.c-m-y-k.com))

**SUBSTRATE COMPATIBILITY:** compatible with all standard substrates available on the market

**PRINTING ENVIRONMENT:** Temperature: 65°-85°F (18°-30°C); Relative Humidity: 20% to 70% (noncondensing)

**STORAGE TEMPERATURE:** Temperature: 50°-85°F (10°-30°C); Relative Humidity: 5% to 70%

**SHELF LIFE:** 12 months from production date

**SAFETY DATA** – please refer to MSDS



## Technical Data Sheet (TDS)

# PRIME PRMS33

### WORKING INSTRUCTIONS:

#### INK CHANGEOVER

- This is a Mix & Match™ product, optimized to replace Mimaki SS21™ inks. This ink can be replaced on individual cartridge level without the need to flush, replace parts or perform color profiling when using original SS21 profiles.
- Mix & Match products are designed to facilitate easy ink changeover and not to work in conjunction with OEM inks for long periods of time.
- Despite of high color gamut compatibility in laboratory conditions the human eye might detect color variations, on certain media types, in specific light conditions. For best image quality and critical color matching Bordeaux recommends using dedicated color profiles.
- When changing the ink over from other 3<sup>rd</sup> party inks: to achieve optimum performance, all ink and jet assemblies must be thoroughly cleaned before using PRIME PRMS33 with PRMS cleaning fluid.

#### Bordeaux's Solutions for Mimaki Product Range:

Printer Model	Mimaki Ink	Bordeaux Ink	Configurations	BBIS *** Supported	M&M	Supports High Speed Printing
Mimaki JV3™/ Converted Roland™	SS2	PRIME PRMS3	440ml Cart 1 Lt Bottle		√	√
Mimaki JV33/CJV30™	SS21	PRIME PRMS33	440ml Cart 900ml Bag 1 Lt Bottle	√	√	√
Mimaki JV5™	HS1	PRIME PRMS5	440ml Cart 900ml Bag	√	√	√
	HS	PRIME PRMS5**	440ml Cart 900ml Bag	√		√
		PRIME GREEN PGNR*	440ml Cart 1 Lt Bottle 900ml Bag	√	√	
	ES3	PRIME ECO PENR	440ml Cart 1 Lt Bottle 900ml Bag	√	√	

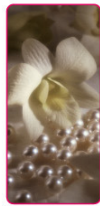
\* Bio Degradable, HAP Free Solvent

\*\* Mix only; colour profiling required.

\*\*\* Bordeaux Bulk Ink System.

#### Disclaimer

It is clarified that the specifications, instructions and other information included in this TDS, including without limitation with regard to storage, use and installation of the products referred to herein, constitute the sole and entire specifications, instructions and other information that apply with respect to the products referred to herein, and supersede any other communications, representations and warranties, whether written, oral, or otherwise with respect to the products referred to herein, and no such communications, representations and warranties, provided or to be provided in any form other than in this TDS or in a replacing or supplementary TDS issued by Bordeaux, is to be relied upon or referred to and same will not obligate Distributor or Bordeaux.



**Technical Data Sheet (TDS)**  
**PRIME PRMS33**